

The State of Iowa is committed to delivering a high quality assessment for its students. The Iowa Statewide Assessment of Student Progress (ISASP) is aligned with the Iowa Core Academic Standards.

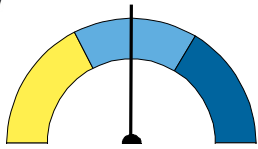
These results will provide educators, parents, and students important information about student performance that can be used to guide learning to best help each student. More information about your student's achievement level scores can be found at <https://iowa.pearsonaccess.com/performance-levels/>.

To access interpretive information, visit the Information for Families page on the ISASP Portal at <https://iowa.pearsonaccess.com/families/>, or use the Quick Response Code (QR Code) to the right with a smartphone, tablet, or other device.



### Overview of how FIRSTNAME performed on the ISASP

ENGLISH LANGUAGE ARTS TOTAL      Scale Score: **498**      Achievement Level: **PROFICIENT**

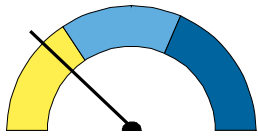


- ADVANCED (999-999)
- PROFICIENT (999-999)
- NOT YET PROFICIENT (999-999)

The English Language Arts (ELA) Total scale score is the combination of your Reading (999) and Language/Writing (999) scale scores.

A student at this level has the knowledge, skills and abilities to be proficient in ELA. This may include the ability to read, comprehend and analyze literary and informational texts. This may also include the ability to write coherent pieces that are appropriate, organized, and use standard English.

MATHEMATICS      Scale Score: **427**      Achievement Level: **NOT YET PROFICIENT**



- ADVANCED (999-999)
- PROFICIENT (999-999)
- NOT YET PROFICIENT (999-999)

A student at this level has not demonstrated the knowledge, skills and abilities to be proficient in Mathematics.

STUDENT PERFORMANCE BY DOMAIN

Domain performance can provide insight into your student's strengths and opportunities for improvement. In the tables below your student's performance is displayed by domain.



ELA-READING Domains

STUDENT PERFORMANCE

|                                    | Low | Middle | High |
|------------------------------------|-----|--------|------|
| Key Ideas and Details              |     |        | ✓    |
| Craft and Structure                |     | ✓      |      |
| Integration of Knowledge and Ideas |     | ✓      |      |



ELA-LANGUAGE/WRITING Domains

STUDENT PERFORMANCE

|   | Low | Middle | High |
|---|-----|--------|------|
| Research to Build and Present Knowledge                 | ✓   |        |      |
| Production and Distribution of Writing                  |     |        | ✓    |
| Text Types and Purposes                                 | ✓   |        |      |
| Conventions of Standard English / Knowledge of Language |     |        | ✓    |
| Vocabulary Acquisition and Use                          |     | ✓      |      |



MATHEMATICS Domains

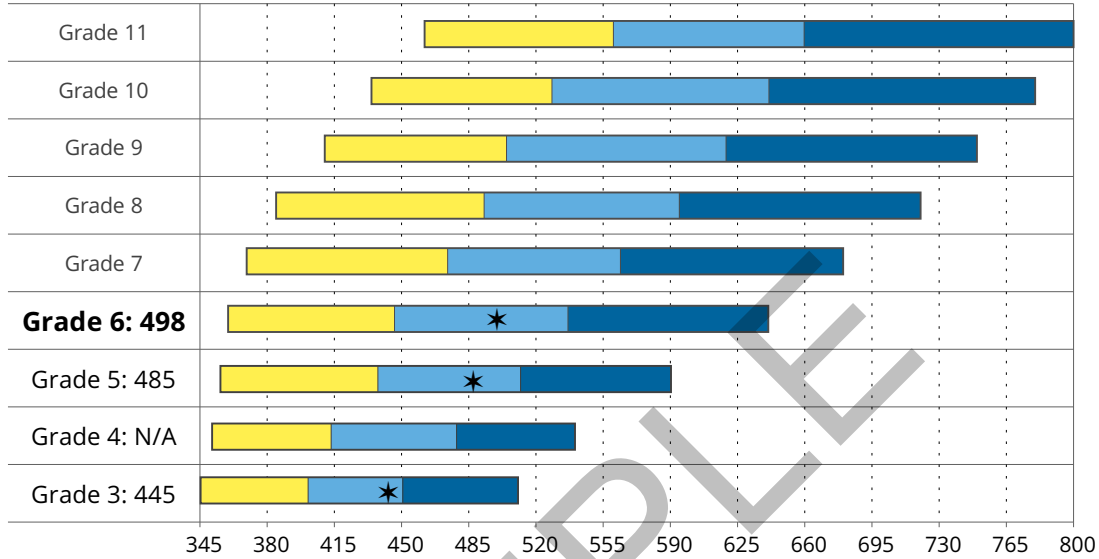
STUDENT PERFORMANCE

|                                       | Low | Middle | High |
|---------------------------------------|-----|--------|------|
| Ratios and Proportional Relationships | ✓   |        |      |
| The Number System                     |     | ✓      |      |
| Expressions and Equations             |     | ✓      |      |
| Statistics and Probability            | ✓   |        |      |
| Geometry                              | ✓   |        |      |

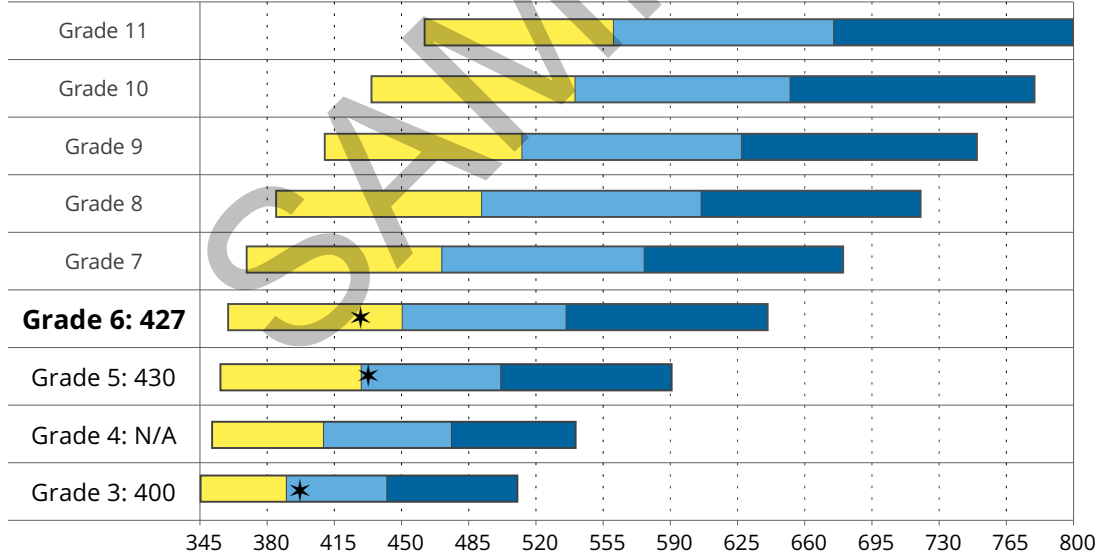
GROWTH

Growth is determined by comparing a student's scale score from a previous year with this year's scale score. The bar graph below displays the range of scale scores associated with each achievement level for the grades in which the ISASP is administered. Your student's scale scores are marked on the corresponding bar graph with a ★ (star).


ENGLISH LANGUAGE ARTS



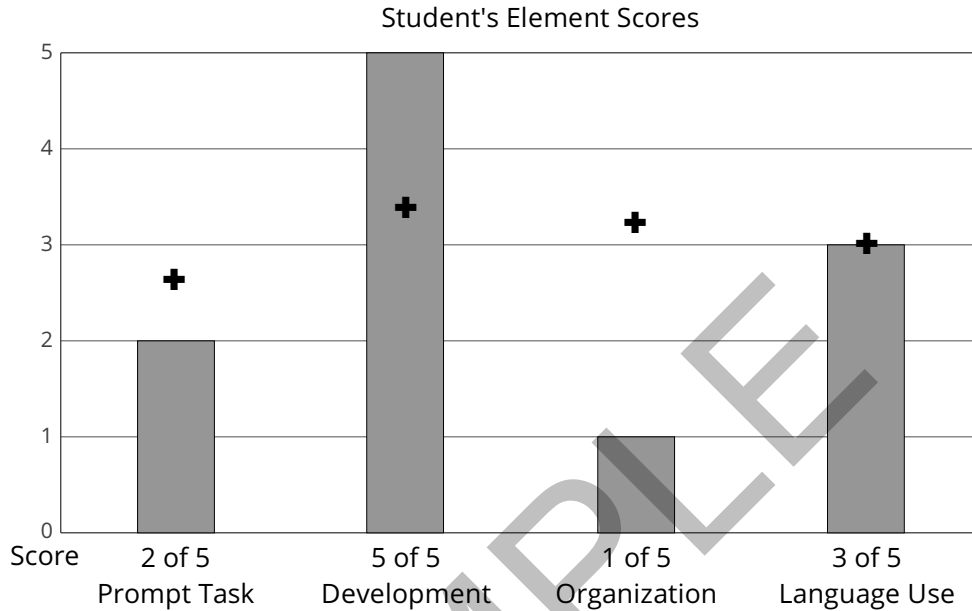
MATHEMATICS



ACHIEVEMENT LEVELS:  NOT YET PROFICIENT  PROFICIENT  ADVANCED

 WRITING RUBRIC SCORES




Your student's essay was scored on four independent elements of writing: Prompt Task, Development, Organization, and Language Use. Specific descriptions of each score point associated with each element may be found online (<https://iowa.pearsonaccess.com/rubrics/>). The graph shows the scores your student earned on each element. The + (plus) indicates the district Average Score for each element.



DEPTH OF KNOWLEDGE (DOK)

Each item on the ISASP is identified with a depth of knowledge (DOK) level. DOK, or cognitive complexity, reflects the type and level of thinking and reasoning required of students when interacting with a particular item. The table displays a fraction indicating the points your student earned out of the total points possible in that DOK level.

Student's Points Earned / Total Points Possible

|                                  |  ELA- READING |  ELA - LANGUAGE/<br>WRITING |  MATHEMATICS |
|----------------------------------|--|--|---|
| Essential Competencies (DOK 1)   | 7 / 10   | 6 / 12   | 6 / 18  |
| Conceptual Understanding (DOK 2) | 10 / 17  | 7 / 13   | 5 / 11  |
| Extended Reasoning (DOK 3)       | 4 / 7  | 3 / 8  | 3 / 10  |